

**Appendix 5.2 Unit 6 Ballyragget-Kilkenny
Photographic Record**



Plate 1: Existing substation at Kilkenny.



Plate 2: General location of proposed BK 104 angle mast (WL 83).



Plate 3: Area of proposed BK102 poleset (WL83)



Plate 4: WL85 BK102 angle mast location from WL83 due to livestock.



Plate 5: BK100 and BK101 looking NNE (barley field WL82)



Plate 6: BK101 at edge of motorway link looking E.



Plate 7: BK100



Plate 8: BK99 (WL81) looking ENE.



Plate 9: Stone house WL 80 looking ENE.



Plate 10: BK98 (WL 80) looking NE.



Plate 11: BK97 (WL78) looking E.

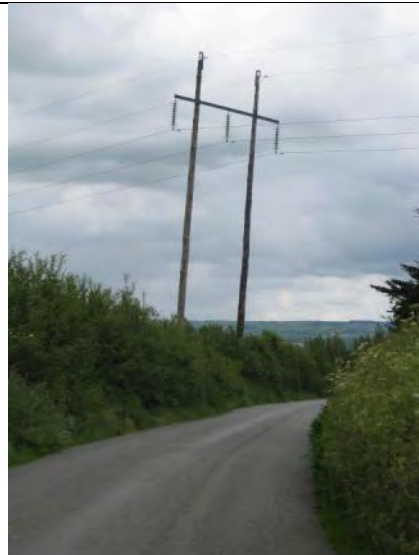


Plate 12: BK96 (WL 76) on road side looking NE



Plate 13: BK95 (WL76) looking S.



Plate 14: View of BK95 (WL 76) from KK020-009 Templemartin Church and Graveyard National Monument looking SE.



Plate 15: View of BK94 angle mast (WL 76) from KK020-009 Templemartin Church and Graveyard looking N.



Plate 16: KK020-009 Church and Graveyard.



Plate 17: Location of BK94 angle mast (WL76) looking NW.



Plate 18: BK92 (WL75) looking WSW.



Plate 19: BK93 (WL75/76) looking SE.



Plate 20: BK 91 (WL74) looking W.



Plate 21: BK89 angle mast (WL72) looking SSW.



Plate 22: BK 90 looking SE.



Plate 23: BK91 looking SE.



Plate 24: BK89 angle mast (WL72) looking NW.



Plate 25: Roadbridge at Cellarstown between BK89 and BK88 looking N from WL 72.



Plate 26: BK 88 (WL 73) looking NE.



Plate 27: BK84 (WL 70) looking NW



Plate 28: BK85 (WL70) looking SE.



Plate 29: BK 83 (WL69) looking NW.



Plate 30: BK80 WL68 looking E.



Plate 31: BK 79 angle mast WL67/68 looking N.



Plate 32: BK77 WL 67 looking WSW.



Plate 33: BK76 (WL67) taken from ringfort KK014-068 looking W.



Plate 34: KK014-068 ringfort from BK76 WL67 looking ESE.



Plate 35: BK70 Radestown Lane (WL 64) looking NE



Plate 36: BK71 and BK72 WL65 looking SE.



Plate 37: BK70 (WL 64) looking N.



Plate 38: BK69 (WL 63) looking NE.



Plate 39: BK68 WL63 looking N.



Plate 40: BK67 WL61 looking N.



Plate 41: National Monument KK014-066 church and graveyard looking W.



Plate 42: KK014-066 looking N from public road in direction of existing B-K line (no views)



Plate 43: BK64 WL61.



Plate 44: BK65 WL61.



Plate 45: BK63 WL59.



Plate 46: BK62 WL59 looking N.



Plate 47: Site of levelled enclosure KK014-040 WL59



Plate 48: BK61 WL58 on NE side of Dunmorepark demense wall.



Plate 49: BK57 WL54 in crop looking S.



Plate 50: BK56 in pasture WL54 looking SW.



Plate 51: BK55 WL53 adjacent to overgrown quarry.



Plate 52: Overgrown Limekiln 1 at Bullockhill WL59.



Plate 53: BK54 WL53



Plate 54: BK53 WL53 looking NW.



Plate 55: BK51 angle mast looking N.



Plate 56: BK50 WL53 looking N.



Plate 57: Protected Structure D36 Dinins Bridge Mohill looking N.



Plate 58: BK48 WL49 from Dinins Bridge looking NW.



Plate 59: BK49 WL52 from Dinins Bridge looking SW.



Plate 60: BK48, WL49 looking SE.



Plate 61: BK46 angle mast WL looking NNW.



Plate 62: BK47 at roadside looking



Plate 63: BK45 (WL 47) looking S.



Plate 64: BK43 WL45 with Jenkinstown Demesne wall in background looking NW.



Plate 65: BK42 WL45 and Jenkinstown Demesne wall in background looking W.



Plate 66: BK41 adjacent to where Jenkinstown Demesne wall turns in a SW direction.



Plate 67: BK38, 39 and angle mast 40 WL45 with Jenkinstown Demesne wall in background looking SE.



Plate 68: BK37 looking S.



Plate 69: 'Coolcraheen' Shanganny Church and Graveyard KK010-060 taken from WL43 looking NE.



Plate 70: BK33 WL40 with Limekiln 3 Foulksrath to right.



Plate 71: BK33 looking S.



Plate 72: BK28 looking N.



Plate 73: BK29, WL16 and site of limekiln 5 looking W.



Plate 74: Site of limekiln 7 adjacent to BK27 WL35.



Plate 75: BK25 WL33 looking E.



Plate 76: BK20 at road edge.



Plate 77: Site of Limekiln 9 WL29 looking E.



Plate 78: BK15 in foreground and BK16 in background WL27 and 28



Plate 79: BK 18 WL29 looking SE.



Plate 80: BK14 and BK15 WL27 looking SE.



Plate 81: BK11 angle mast WL27/26 looking ESE.



Plate 82: BK8 and BK9 WL24 / 23 looking NNW.



Plate 83: BK6 WL21 looking SW.



Plate 84: Existing BK4 anglemast WL21 looking NW.



Plate 85: Proposed location of BK4 angle mast looking N WL21.



Plate 86: Site of enclosure KK005-096 WL21 looking NNW.



Plate 87: View of WL19 to E of Ballyragget substation.



Plate 88: View of site of proposed new substation at Ballyragget looking W.